

# 1040L POWER AMPLIFIER

## 400 Watts RF Power For:

- Ultrasonics
- Industrial
- Medical
- Lab Use



## Featuring:

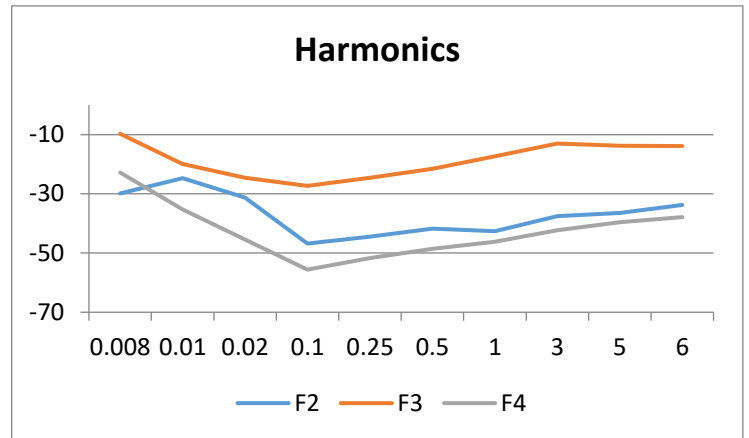
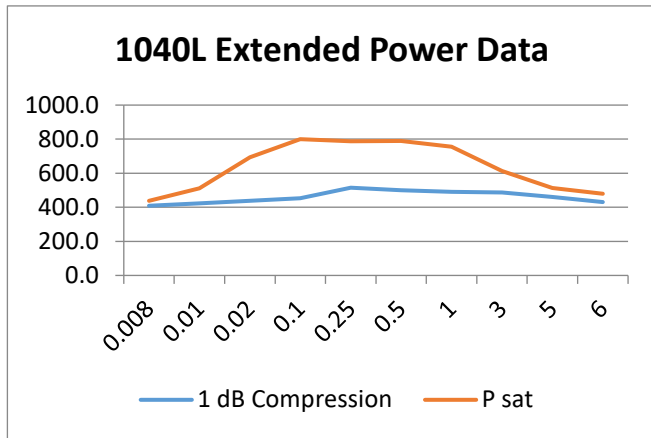
- 10 KHz – 5 MHz
- Power Measurement
  - Forward & Reflected
- Instantaneous Bandwidth
- Solid State Reliability
- Forced Air Cooling

### E&I 1040L Specifications\*

<b>Class of Operation:</b>	Class AB
<b>Frequency Coverage:</b>	10 KHz – 5 MHz
<b>Rated Power:</b>	400 Watts
<b>Saturated Power:</b>	500 Watts
<b>Power Gain:</b>	55 dB nominal
<b>Gain Flatness:</b>	+/- 1 dB to 1 MHz +/- 2 dB to 5 MHz
<b>Input Power for Rated Pout:</b>	1.3 mW or 1.14 dBm
<b>Input Impedance / VSWR:</b>	50 $\Omega$ / VSWR, 1.5:1 Max
<b>Output Impedance / VSWR:</b>	50 $\Omega$ / VSWR, 2:1 Max
<b>Ruggedness:</b>	$\infty$ :1 VSWR
<b>Stability:</b>	Unconditional into any passive or reactive load
<b>Protection:</b>	Unit will withstand input signal of +13 dBm without damage (1.0 V rms) max.
<b>AC Input:</b>	104 – 240 VAC 9 A @ 120 V 4.5 A @ 240 V
<b>Temperature Range:</b>	0° – 45° C
<b>Cooling:</b>	Forced Air
<b>Dimensions (H x W x D):</b>	5.3 x 16.5 x 20 inches 134.5 x 420 x 508 mm
<b>Weight:</b>	54 lbs (24.4 kg)
<b>Connectors:</b>	BNC
<b>Rack Mounting:</b>	Yes
<b>RF Input Signal:</b>	AM, FM, SSB, Pulsed



# 1040L POWER AMPLIFIER



#### Protection:

- Software Overdrive Limit: 600 Watts
- Software Reverse Power Limit: 450 Watts

#### Performance into 50 ohms

Input				Amplifier Gain Nominal dB	Output			
Input Power Watts	dBm	V p-p Volts	V rms Volts		Output Power dBm	Watts	V p-p Volts	V rms Volts
0.000013	-18.98	0.07	0.03	55	36.02	4.00	40.00	14.14
0.0001	-9.44	0.21	0.08	55	45.56	36.00	120.00	42.43
0.0013	1.02	0.71	0.25	55	56.02	400.00	400.00	141.42
0.0016	2.04	0.80	0.28	55	57.04	506.25	450.00	159.10



Electronics & Innovation, Ltd.  
 150 Research Blvd.  
 Rochester, NY 14623  
 Tel: 585-214-0598 / Fax: 585-214-0580  
 www.eandiltd.com